

MICHEL REIN PARIS/BRUSSELS

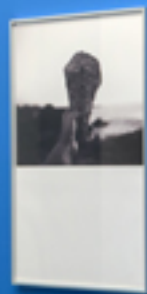


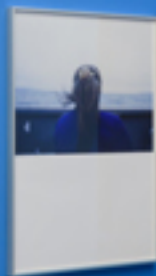
# Enrique Ramírez

## LA GRAVEDAD

20.10 - 17.12.2016

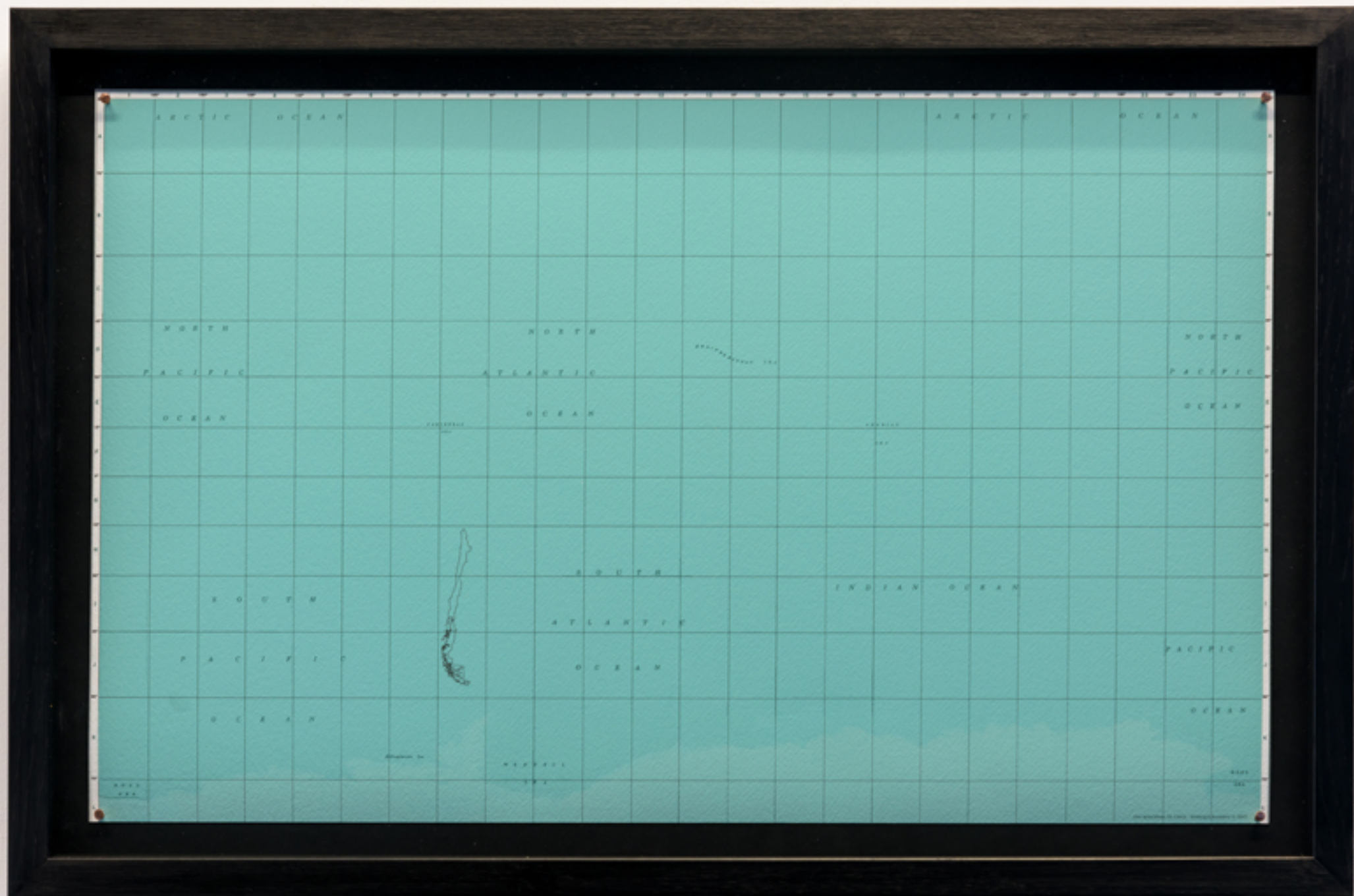


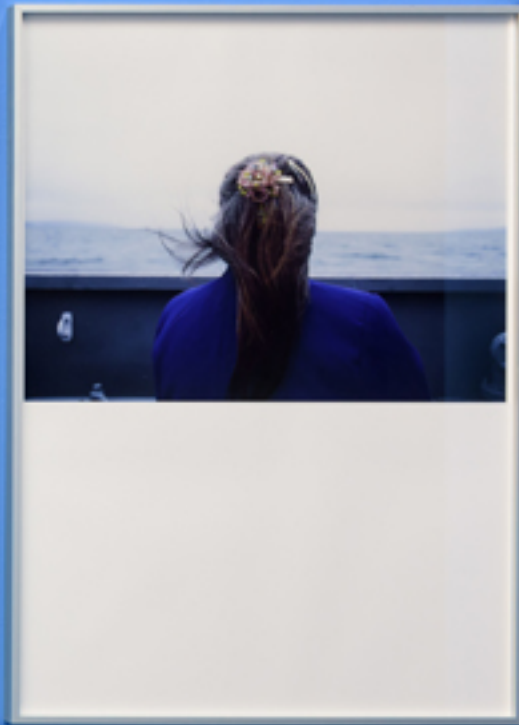


















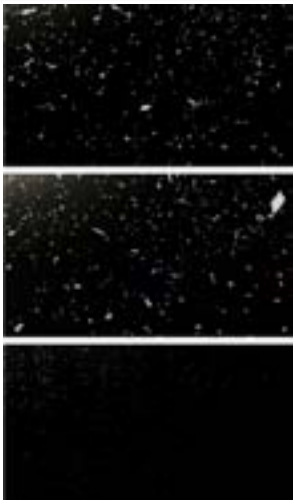


# Litany




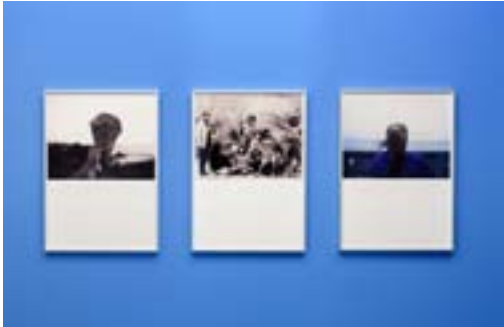


The only hope is the US:  
**Americanization is  
the survival strategy  
in globalization.**



# ARTWORK LIST

INV Nbr	PICTURE	TITLE
RAMI16136		<p>Enrique Ramírez  <i>Doce botes para un continente, europa</i>, 2016  hand-embroidery on cotton fabric, metal pliers, wooden frame, glass  40 x 48 cm / 15,7 x 18,9 in  Frame: 52,5 x 62 x 5 cm / 20,7 x 24,4 x 2 in  Edition of 5 ex + 2 AP  Courtesy of the artist and Michel Rein, Paris/Brussels</p>
RAMI16139		<p>Enrique Ramírez  <i>El rumor</i>, 2016  lambda print on mat paper, aluminium frame, engraved glass  Image: 60 x 40 cm / 23,6 x 15,7 in  Frame: 61 x 41 x 2 cm / 24 x 16,1 x 0,8 in  Edition of 5 ex + 2 AP  Courtesy of the artist and Michel Rein, Paris/Brussels</p>
RAMI15091		<p>Enrique Ramírez  <i>La gravedad</i>, 2015  vidéo HD 24 FPS, color, son, black wall screening  11'26"  Edition of 7 ex + 2 AP  Courtesy of the artist and Michel Rein, Paris/Brussels</p>

# ARTWORK LIST

INV Nbr	PICTURE	TITLE
RAMI16135		<p>Enrique Ramírez  <i>La gravedad n°2</i>, 2015            vidéo HD 24 FPS, color, sound            14'47"            Edition of 7 ex + 2 AP            Courtesy of the artist and Michel Rein, Paris/Brussels</p>
RAMI16141		<p>Enrique Ramírez  <i>Les échoués</i>, 2016            diptych, 2K video transfered on digital file, color sound            left : 8'18            Edition of 5 ex + 2 AP            Courtesy of the artist and Michel Rein, Paris/Brussels</p>
RAMI16144		<p>Enrique Ramírez  <i>Litany</i>, 2016            The present and future of Americanization            clipboard, paint, engraved glass            20 x 10 x 0,5 cm            Unique artwork            Courtesy of the artist and Michel Rein, Paris/Brussels</p>
RAMI16142		<p>Enrique Ramírez  <i>Los hechos reales</i>, 2016            triptych: 3 lambda prints on mat paper, 3 aluminium frames, glass            Image: 70 x 50 cm / 27,5 x 19,7 in            Frame: 71 x 51 cm / 28 x 20 in            Edition of 5 ex + 2 AP            Courtesy of the artist and Michel Rein, Paris/Brussels</p>

# ARTWORK LIST

INV Nbr	PICTURE	TITLE
RAMI16138		<p>Enrique Ramírez  <i>Silueta (conmemoración 40 años del golpe estado Argentina)</i>, 2016            lambda print on mat paper, aluminium frame, glass            Image: 100 X 70 cm / 39,3 x 27,5 in            Frame: 101 x 71 x 2,5 cm 101 x 71 x 2,5 cm / 39,7 x 27,9 x 1 in            Edition of 5 ex + 2 AP            Courtesy of the artist and Michel Rein, Paris/Brussels</p>
RAMI15103		<p>Enrique Ramírez  <i>The Kingdom of Chile</i>, 2015            print on Paper Rag Photographique 310gr, copper nail, wooden frame, glass            Image: 36,3 x 57,7 cm / 14 x 22,7            Frame: 43,6 x 65 x 4 cm / 17,2 x 25,6 x 1,6 in            Edition of 30 ex + 2 AP            Courtesy of the artist and Michel Rein, Paris/Brussels</p>

## 'Enrique Ramírez: La Gravedad' at Michel Rein Gallery, Paris



Enrique Ramírez Silueta, 2016 lambda print on mat paper, aluminium frame, glass, 100 X 70 cm  
(Courtesy: Michel Rein Gallery)

Enrique Ramirez's second solo show, titled 'La Gravedad', with Michel Rein Gallery, Paris, is on view through December 17, 2016.

Ramirez uses gravity as a means to understand inevitability and groundedness, but above all, beyond its symbolic associations with political discourse that the artist so expertly materialises, it is a force of attraction that acts on every thing, every mass, without exception. When the artist throws pieces of black paper into a clear and transparent sky, this force is at work to make them fall back to the ground – light, fragile, vaporous. In the same way, when playing on contraries, he lights up small white papers on a night black background, creating an even more hypnotic contrast. “For me, these papers are like souls thrown into the sky, ideas, contestations, silent voices (that have been made silent), they also evoke the spherical aspect of the world, the night which reigns here, whilst it is daytime elsewhere,” says Enrique.

*The exhibition is on view at Michel Rein, 42 rue de Turenne, F-75003 PARIS. For details, visit, [michelrein.com/en](http://michelrein.com/en) (<http://michelrein.com/en/expositions/presentation/171/la-gravedad>)*

