

MICHEL REIN BRUSSELS

**CHRISTIAN HIDAKA**

***Godo***

**21.03 - 19.05.2024**

## GODO

The exhibition's title, 'Godo' is taken from the name of a village just outside of Ravenna in Italy.

This is where the former Museo dell'Arredo Contemporaneo, a furniture design museum was situated before it closed some years ago. Ettore Sottsass, with Johanna Grawunder designed a pavilion at the museum's entrance consisting of a large mosaic in one space and a closed cloister painted in Cobalt Blue and white in another.

Drawn to this place in part because of my fascination with arches, I climbed over the fence of this derelict site, to see Sottsass's architectural work. The tall, thin arches in the cloisters continue an afterlife of the Byzantine arches found in the churches of Ravenna. In my painting, 'Godo', through using axonometric projection, I have depicted a corner of Sottsass' work with a figure racing towards the entrance of the area containing the mosaics.

The murals at Galerie Michel Rein depict similarly proportioned arches to Sottsass' own. I look to Sottsass as a stepping stone to Constructivism and Cubism. And because he painted his cloisters in a brilliant Cobalt blue, they make me think not only of the Mediterranean but also of the celestial world.

The running figure in 'Godo', the seated 'Snake Charmer', the boy in 'White Rabbit' and the young female 'Desert Drummer' all wear blue outfits containing swirls, stars and moons. These motifs are derived from the costume Picasso designed for the acrobat in 'Parade' (1917). Cocteau had described the acrobat 'as being on close terms with the stars' and believed that he, 'defies gravity, an equilibrist who always lands on his feet.'

The acrobat leaps between the stars and has the dexterity to jump between constellations of ideas, references and images. I cloth my figures with the memory of the acrobat's leotard.

Elsewhere in the show is a mural of an arch painted in deep blue containing a painting with a niche. The hands are those of the French artist, Raphael Zarka who holds his principle form of interest, the Rhombicuboctahedron. His hands take the pose of Nicolas Kratzer's as he did for Holbein whilst holding a small sundial. Around the niche's edges are various marbles and stones (evoking a favorite painting of ours in the Louvre by Giuliano Romano & Raphael) and obliquely rendered planes improvised from diagrams found in John Joshua Kirby's treatise on perspective (1754) which describe the laws of perspective. Kirby's treatise perfected a story which began with Piero Della Francesca's own, finally resolving all of perspective's theorem's.

Laslty, on the Rhombi are a series of dots denoting numbers which add up to 76 in each line of squares. This takes forward Durer's 2D magic square into the domain of 3D and it has been rendered with the four colours of the Ancient Greek Tetrachromatikon, the four colour palette which was used by the painters of Antiquity, revived by the painters of the renaissance and employed by Picasso and Braque during analytical cubism. The colours mix where the numbers coincide.



**Godo, 2024**  
Oil on linen  
31.89 x 23.62 in (81 x 60 cm)  
HIDA24327





**Houses I (reprise), 2024**  
Oil on linen  
14.17 x 22.44 in (36,5 x 57 cm)  
HIDA24328



**Houses II (reprise), 2024**

Oil on linen

15.35 x 21.26 in (39 x 54 cm)

HIDA24329





**Kirby Mosaic Variation, 2024**  
Oil on linen  
45.67 x 28.74 in (116,5 x 73 cm)  
HIDA24330



**Rabbit Acrobat, 2024**  
Oil on linen  
28.74 x 23.62 in (73 x 60 cm)  
HIDA24331



**Desert Drummer, 2024**

Oil on linen

24.02 x 16.93 in (61 x 43,5 cm)

HIDA24332





**Niche with Magic Rhombi (with RZ & LH), 2024**  
Oil on wood (MDF)  
29.13 x 18.11 in (74,5 x 46,2 cm)  
HIDA24333



**Not titled yet, 2024**  
Oil on linen  
24.8 x 15.75 in (63,5 x 40 cm)  
HIDA24335



**David's cat, 2024**  
Oil on wood (MDF)  
9.06 x 6.3 in (23,8 x 16,8 cm)  
HIDA24336



**Dark Star, 2024**  
Oil on wood  
Diameter 38 cm  
HIDA24339





**The Snake Charmer, 2024**  
Oil on linen  
28.74 x 23.62 in (73 x 60 cm)  
HIDA24340



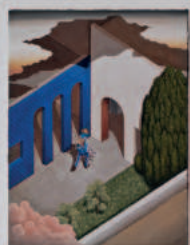
**Untitled (Houses 2024), 2024**  
Watercolor on paper  
10.24 x 14.17 in (26,5 x 36,5 cm)  
HIDA24341



**Untitled (Rabbit Boy), 2024**  
Watercolor on paper  
19.69 x 13.78 in (50 x 35,5 cm)  
HIDA24343



**Untitled, 2024**  
Charcoal on paper  
38 x 28.5 cm  
HIDA24344



**Born in 1977 in Noda (Japan). Lives and works in London (United Kingdom).**

**Christian Hidaka is a painter who renews the genre of landscape. His works draws from a thousand different sources: Japanese landscapes, science fiction, psychedelism, surrealism, Renaissance painting... From his works emerges a poetry, an invitation to travel towards irrational and fantasized universes.**

***Collections:***

CNAP - Centre National des Arts Plastiques, France  
Colas Foundation, France  
Collection Honart Museum, Tehran, Iran  
Cranford Collection, London, UK  
Fonds d'art contemporain - Paris Collections  
FRAC Corsica, France  
FRAC Pays de la Loire, France  
Goss Michael Foundation Collection, USA  
MUDAM Collection, Luxembourg  
Sigg Collection, Switzerland  
Simmons and Simmons, London, UK  
Scorpio Trust, Geneva, Switzerland  
The Israel Museum, Jerusalem, Israel  
The Frederick R. Weisman Collection, Los Angeles, USA  
The Saatchi Gallery, London, UK  
UBS Collection, London, UK  
Zabludowicz Trust, London, UK  
Zoe and Joel Dictrow Collection



MICHEL REIN BRUSSELS

**MICHEL REIN Brussels**  
Washington rue/straat 51A  
1050 Brussels  
Belgium

Phone +32 2 640 26 40  
[contact.brussels@michelrein.com](mailto:contact.brussels@michelrein.com)

Opening hours  
Thursday > Saturday 10am - 6pm

**MICHEL REIN Paris**  
42 rue de Turenne  
75003 Paris  
France

Phone +33 1 42 72 68 13  
[galerie@michelrein.com](mailto:galerie@michelrein.com)

Opening hours  
Tuesday > Saturday 11am - 7pm